



FALL 2015
VOLUME XI NUMBER 2

INTO THE HEART OF EUROPE

THE NEWSLETTER OF DISCOVER EUROPE LTD.

However sad I am to bid farewell to summer, I have to take solace in the fact that fall is so beautiful here in New England. Still, it really doesn't seem fair - remember when summers used to last forever? And now you blink and it's over.

The best thing, though, that happened this summer was that my wife, Sarah, and I were proven to be two of the smartest people in the travel business. How so, you ask? Easy, we hired Tiffany and Joanna. Not only have they made our lives easier with the calm, intelligent, confidence that they bring to each task, but they are just so much fun to have around. Our office is a really nice place to be these days!

But, of course, every silver lining has a cloud. The price I am having to pay for this workplace utopia is to be dragged kicking and screaming from my essentially luddite roots into the age of "social media." Shouldn't it be called "antisocial" media?

Seriously, I do see the benefits, and my objections are really just a case of "old dogs-new tricks." So please, let us have your e-mail address, so that we can keep you updated on all the latest news from Europe, and please like us on Facebook!

Michael Induni, President

DISCOVER EUROPE LTD.
95 Adams Street
Keene, NH 03431, USA
Toll free: (866) 563-7077
EMAIL: tiffany@discovereuropeltd.com

DISCOVER EUROPE (UK)
158 Kentish Town Road, London, UK
Tel: (020) 7240-3979



ICELAND - THE NORTHERN LIGHTS MARCH 10TH - 14TH 2016

Imagine a tiny island perched at the top of the globe, a magical land with warm, friendly, resourceful residents, where every turn is a feast for the senses, a staggeringly scenic landscape that is alive and ever-changing right in front of your eyes. Where the skies welcome you with nature's fireworks display, where the glaciers pop, crack, and sing you a simple melody, and the geothermal waters rejuvenate your every cell like a real-life fountain of youth.

Such a place does exist beyond fairy tales, it is called Iceland - the land of fire and ice. A land of stark contrasts. Iceland is home to Europe's largest glacier, some of the world's most active volcanoes, black sand beaches with turquoise waters, lava fields covered in chartreuse moss, rugged fjords, soaring waterfalls, bubbling hot springs, diversity and charm from North to South.

It can honestly be said that Iceland is like no other place on earth - where else can you walk from America to Europe without getting your feet wet? Come and visit and you will begin to realize why the young people, even though they go abroad to study, almost always return home to live and raise families.

Experience the warmth of the people and the beauty of the land. And eat some of the freshest, healthiest food it will ever be your pleasure to taste - just avoid the fermented shark head! Visit Iceland with Discover Europe this winter and bring your sense of adventure!

**CONTACT DISCOVER EUROPE FOR THE FULL ITINERARY, ALSO
AVAILABLE ON OUR WEBSITE WWW.DISCOVEREUROPELTD.COM.**



FOR THE LOVE OF FRANCE

If you love wild lavender, olive trees, fields of sunflowers and delicious wine, the Languedoc-Roussillon is for you! Not on the usual tourist route, the scenery in the Aude and Corbieres regions host some of the most beautiful landscapes in the Mediterranean. Vineyards and cypress trees dot the hillsides alongside plane tree-lined roads (planted by Napoleon to shade his marching armies), making driving from one small village to another a visual treat. The friendliness of the local population will quickly destroy any stereotypes you may harbor of the French; the food is fresh and local; the prices are low and the pace is sublime. Stop in at a town brasserie for “le menu” - a three course meal of warm goat cheese salad, steak frites and tart au pomme, washed down with a nice cool “pichet” of rosé from the local *cave* (and all for around Eur 12!) and you will start to feel a little bit French, et pourquoi pas? Come join us in France!

ARE YOU SIGNED UP YET?

Discover Europe had added two new ways to share the latest in travel news and updates -- Facebook and our e-news letter.

Visit our website and you will be prompted to sign up, or call us at 1.866.563.7077. You can decide what information is most relevant to you as part of the welcome process. Whether you like garden tours or Greece, Iceland or Italy, Mysteries or Madeira, choose what you are most interested in receiving from Discover Europe and we will tailor your inbox accordingly. While we are happy to continue sending out the hard copy of the newsletter, receiving it electronically will allow you to link directly to the full itineraries - and also save trees!



And please like our Facebook page. We'll be sharing new itineraries and other exciting news, pictures and videos. Like Discover Europe and love being part of the conversation.

POLDARK

We are pleased to announce that our excellent collaboration with Alexandra Messervy and her company, The English Manner, will continue in 2016 with our tribute to the wonderful novels of Winston Graham.

Recently re-made as an acclaimed TV series by the BBC and airing now on your local PBS station, the story is set amongst the spectacular scenery of England's West Country - the counties of Devon and Cornwall.



Alexandra grew up reading the books while holidaying with her family in the area where they were set, and her abiding love of both with no doubt shine through as she personally hosts this tour.

OUR FAVORITE HOTELS

BELMOND REID'S PALACE, MADEIRA

Set in subtropical gardens overlooking the Atlantic Ocean, Belmond Reid's Palace is an ultimate destination to relax in the sunshine.

Set on a cliff in Madeira, overlooking the capital, Funchal, the hotel has been favored by people such as Sir Winston Churchill, Gregory Peck, George Bernard Shaw and Rainer Maria Rilke. Come see the wonder that is the Belmond Reid's Palace Hotel on our tour for Vassar College in January - *Lisbon & Madeira*.



Photo courtesy of Genyus Lucci

A NEW PUZZLE:

What is: an Italian lunch, surrounded by water and prone to eruptions.

The first solution, drawn at random from all the correct entries submitted, will receive a \$200 discount off any trip listed in this newsletter.

AND A SOLUTION: In the last issue we asked: Early in the 20th century, an American lady who (against her will) was married into the English aristocracy, famously said that she had fulfilled her

matrimonial obligations because she had produced “an heir and a spare.”

Who was she and to whom was she so miserably married? The answer is - Consuelo Vanderbilt who married the 9th Duke of Marlborough

The first correct solution to be drawn at random was sent in by Kathryn Piffat of Boston and she can deduct \$200 from the cost of any tour listed in this newsletter. Interestingly this is the second time that Kathryn has won our puzzle prize! It really is random.

ITINERARIES THROUGH 2016

Discover Europe also runs tours that are custom-designed for various organizations such as Harvard University, Bryn Mayr, Smith College, Tufts University, Vassar College, the Barrington Community School and many others. Although these "sponsored" tours are not listed below, they are very often available to non-members upon request. Full details on them can be found on our website.

Discover Europe can also put together private tours. Please contact us for details - we are always happy to talk about the process.

DALMATIAN COAST
ALONG THE DALMATIAN COAST
APRIL 21ST - MAY 1ST

EASTERN EUROPE
JEWELS OF EASTERN EUROPE
JUNE 2ND - 11TH



ENGLAND
A MYSTERY TOUR?
NOVEMBER 8TH - 14TH 2015

POLDARK
APRIL 14TH - 24TH

LET'S UNPACK IN THE PEAK DISTRICT
MAY 6TH - 14TH

THE BEST OF ENGLISH GARDENS
MAY 17TH - 26TH

THE PASSIONATE GARDENER
MAY 22ND - 31ST

THE CHANNEL ISLANDS
JUNE 9TH - 18TH

A COTSWOLD SPRING
JUNE 16TH - 25TH

THE STATELY HOMES OF ENGLAND
JULY 1ST - 10TH

BRITAIN IN BLOOM
JULY 5TH - 14TH

DISCOVERING EAST ANGLIA
JULY 8TH - 16TH

THE MAGIC OF MEDIEVAL ENGLAND
JULY 29TH - AUGUST 6TH

TREASURE HOUSES OF NORTHERN ENGLAND
SEPTEMBER 8TH - 17TH

THE WEST COUNTRY
SEPTEMBER 15TH - 24TH

FRANCE
PARIS, NORMANDY & THE LOIRE
MAY 26TH - JUNE 4TH

ALONG THE PYRENEES
JUNE 9TH - 18TH

TREASURES OF CATHAR COUNTRY
SEPTEMBER 15TH - 24TH

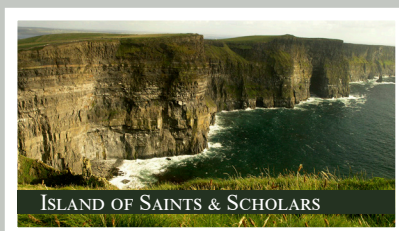
THE CHATEAU DE CAMON
OCTOBER 14TH - 22ND

GREECE
A GREEK EASTER
APRIL 29TH - MAY 8TH

THE GLORY OF GREECE
OCTOBER 20TH - 29TH

ICELAND
THE NORTHERN LIGHTS
MARCH 10TH - 14TH

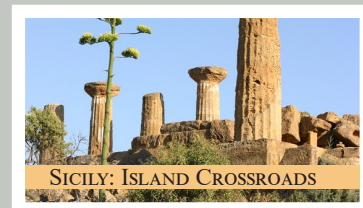
IRELAND
THE ISLAND OF SAINTS & SCHOLARS
JUNE 23RD - JULY 2ND



A LITERARY TOUR OF IRELAND
SEPTEMBER 3RD - 15TH

ITALY
SICILY: ISLAND CROSSROADS
MARCH 18TH - 26TH

UNDER THE TUSCAN SUN
APRIL 29TH - MAY 6TH



ITALIAN LAKES AND GARDENS
MAY 3RD - 10TH

PORTUGAL
LANDSCAPES OF PORTUGAL
MAY 5TH - 14TH

SCOTLAND
CHRISTMAS IN SCOTLAND
DECEMBER 21ST - 29TH 2015

SKYE & THE HIGHLANDS
JULY 21ST - 31ST

JOURNEY TO THE NORTHERN ISLES
JULY 30TH - AUGUST 8TH

ROYAL SCOTLAND
SEPTEMBER 19TH - 30TH

SPAIN
BARCELONA & MALLORCA
APRIL 7TH - 15TH

SPANISH PANORAMA
APRIL 14TH - 23RD

A PILGRIM'S WAY
JUNE 16TH - 25TH

WALES
WALES & WELSH BORDERS
APRIL 28TH - MAY 7TH

LEARN MORE ABOUT THESE TRIPS BY:
CALLING: 866-563-7077
E-MAILING: tiffany@discovereuropeltd.com
VISITING OUR WEBSITE: www.discovereuropeltd.com



DISCOVER EUROPE LTD.
95 Adams St.
Keene, NH 03431

JUNE 2015. *We have had good experiences with other small group tours we have taken in the past, but this trip was the best one by far.*

Clif Sanders & Linda Warn, WI

MAY 2015. *While our Tour was spectacular, my fondest memory is sharing those bittersweet moments with Sir Charles at Blenheim Palace.*

Karen Maher, MI

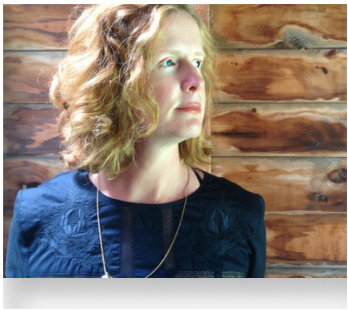
MAY 2015. *I don't know how you could possibly improve it. My sister and I had a wonderful trip. The effects are still with me. The whole experience continues to put a smile on my face.*

Kathy Gordon, MI

NEW STAFF PROFILES

TIFFANY MANNION: BRITTANY, FRANCE

Tiffany is the Director of Marketing at Discover Europe Ltd. And if she could go anywhere, she would head to Brittany.



From the woodwork in the Isaac Bell House in Newport, Rhode Island, to the Kouing Amann pastries first tasted in Montreal, if she falls madly in love with something, it often comes from Brittany.

Like Tiffany, Brittany shares a Celtic heritage counterpoint to its French history. Person and place are also strongly influenced by the brine of the Atlantic ocean.

At Discover Europe, Tiffany spends much of her time working on the website, trip itineraries and building a new email newsletter to share the freshest news. She will also be working on convincing Michael to visit Brittany and expects to share her studies in and passion for the history of Art and Architecture with fellow travelers.

JOANNA LABOUNTY-HERMAN: CROATIA

From the posh city nightlife of Hvar, to getting lost in the wonder of the forest and the deep pools of turquoise in the Plitvice National Park, the ancient walled cities of Dubrovnik or Split, the mystery and slightly off the beaten path rhythm of Croatia draws her in.

You would most likely find Joanna in some hidden small town on the coast of the Adriatic Sea, dining on seafood and sipping some deep red wine. The rugged yet warm people mirror that of the land and that is just her style.

When Joanna isn't daydreaming of faraway lands, she dedicates her time to the nuts and bolts of the operations here at Discover Europe as Director of Operations. From booking airfare, hotels, and car services, she tracks the little details so that your European travels are unforgettable.

